



WWW.KINGWIN.COM

Hardware Installation Guide

Please follow the instructions and make sure the hard drives are successfully installed to the Dual Bay external enclosure!

1. Push the button and pull out the tray.

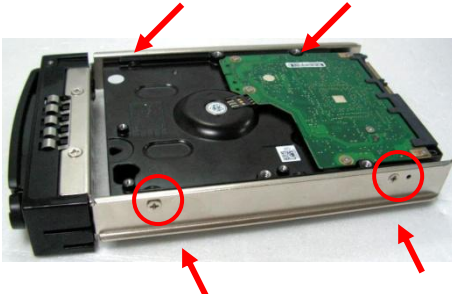


2. Place the HDD into each of the tray.



1

3. Screw the HDD onto both sides of the tray.



4. Push the tray to the end until the HDD is connected with SATA connector.



2



Note: Push in the front panel, make sure all connectors are connected well.



3

HDD Formatting Guide

This device can support JBOD & BIG mode.

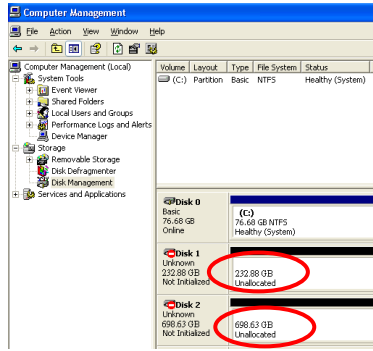
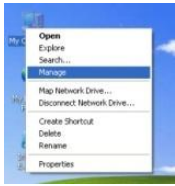
- JBOD: It enables each hard drive to be seen separately as single drive, showing 2 HDD capacities.
- Backup before formatting your HDD.

• Please switch to NORMAL mode on rear panel for JBOD function.



Step 1:

Right-click “My Computer” icon and select the “Manage” column.



Select “Disk Management” and you will see your hard drives show “Unallocated.”

Step 2: Please refer to Step 4

4

BIG : It combine a series of physical hard drives as a single large volume.

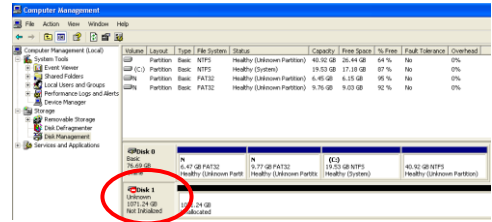
- Please switch to BIG mode on rear panel.



Step 3:

Two brand new HDDs

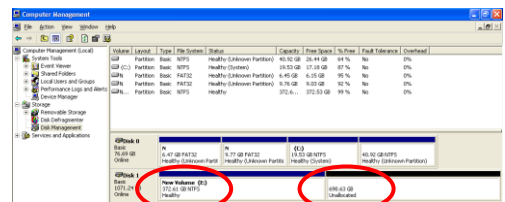
- Select “Disk Management” and you will see your External HDD shows “Not Initialized”.



Two formatted HDDs

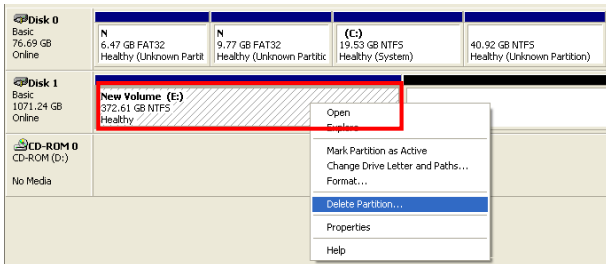
(These two HDDs have to be combined into one disk.)

- Select “Disk Management” and you will see your External HDD only shows one HDD, another shows “Unallocated”.



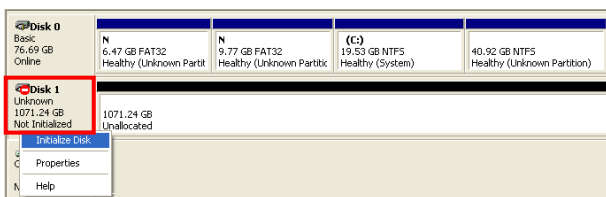
5

- Right-click the red-squared block and select “Delete Partition”.
- Delete both HDDs’ partition then start to format two HDDs into one.



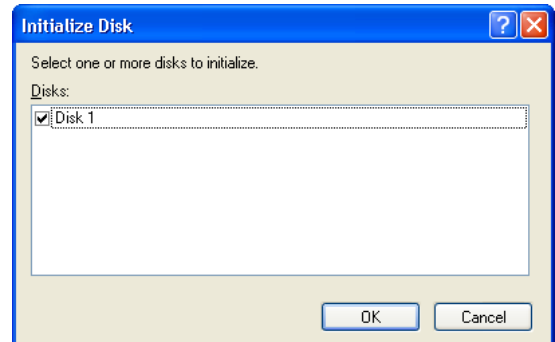
- You will see your External HDD shows “Not Initialized”.

Step 4: Right-click the red-squared block and select “Initialize Disk”.

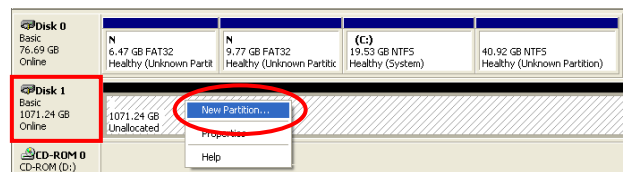


6

Step 5: Press “OK” button to initialize HDD.

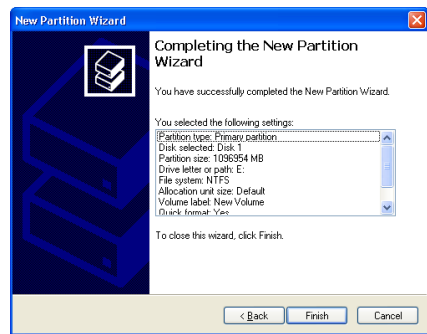
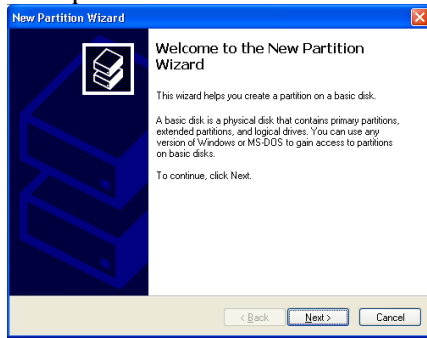


Step 6: The external HDD will be showed “Online”. Right-click the “Unallocated” block and select “New Partition”.



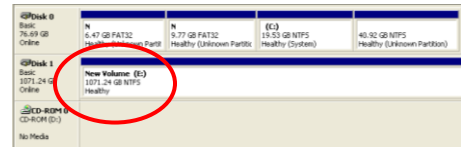
7

Step 7: The “New Partition Wizard” will appear. Please follow the instruction of the wizard to complete the partition.

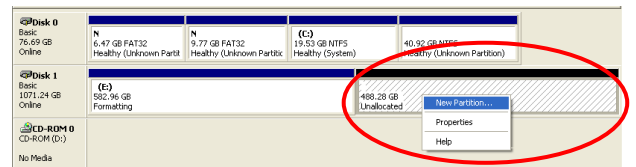


8

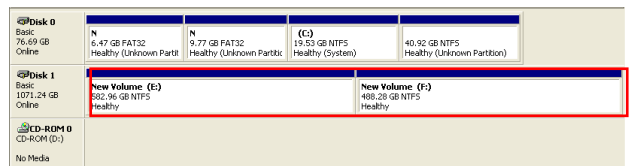
Step 8: When new partition is completed, the external HDD will be recognized as a “New Volume”.



- If you divided HDD into two partitions, format two partitions separately.



- After two partitions are formatted completely, you will see two healthy HDDs.



9